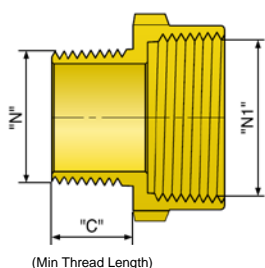


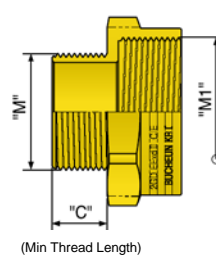
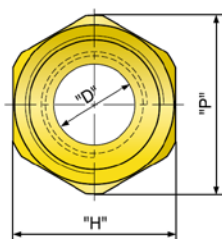
Adaptors – ABAD Range

Applications

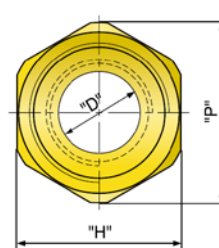
- Flameproof Ex d and Increased Safety Ex e
- For connection between cable entry devices having dissimilar threads
- Male and female threads, both Metric and NPT
- ATEX Certificate Number - Baseefa09ATEX0188X
IECEX Certificate Number - IECEX BAS 09.0090X



(Min Thread Length)



(Min Thread Length)



		FEMALE THREAD																					
		METRIC										NPT											
		M16	M20	M25	M32	M40	M50	M63	M75	M80	M90	M100	1/2"	3/4"	1"	1 1/4"	1 1/2"	2"	2 1/2"	3"	3 1/2"	4"	
MALE THREAD	METRIC		X	X	X	X	X	X	X	X	X	X		X	X	X	X	X	X	X	X	X	
				X	X	X	X	X	X	X	X	X		X	X	X	X	X	X	X	X	X	
					X	X	X	X	X	X	X	X		X	X	X	X	X	X	X	X	X	
						X	X	X	X	X	X	X		X	X	X	X	X	X	X	X	X	
							X	X	X	X	X	X		X	X	X	X	X	X	X	X	X	
								X	X	X	X	X		X	X	X	X	X	X	X	X	X	
									X	X	X	X		X	X	X	X	X	X	X	X	X	
										X	X	X		X	X	X	X	X	X	X	X	X	
											X	X		X	X	X	X	X	X	X	X	X	
												X		X	X	X	X	X	X	X	X	X	
												X		X	X	X	X	X	X	X	X		
													X		X	X	X	X	X	X	X		
														X		X	X	X	X	X	X		
															X		X	X	X	X	X		
																X		X	X	X	X		
																	X		X	X	X		
																		X		X	X		
																			X		X		
																				X			
																					X		
																						X	

Protection

II 2 GD Ex db IIC Gb / Ex eb IIC Gb, Ex tb IIIC Db
Suitable for use in Zone 1, Zone 2, Zone 21 & Zone 22
IP66 to IEC 529
Operational temperature range: -60°C to +100°C

Material

Nickel plated brass or Stainless Steel 316(L)

Accessories

Locknut, sealing washer, serrated washer and earth tag are available

