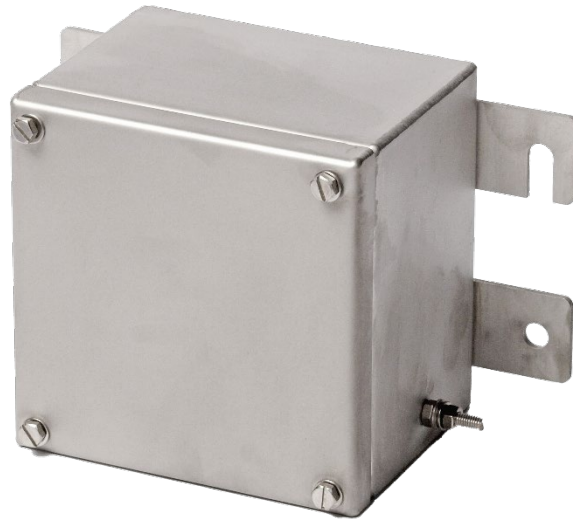


SX66 Stainless Steel Enclosures

IP66

The SX is a highly durable stainless steel enclosure designed for use in the most demanding and hazardous environments.

- Manufactured from marine grade 316L stainless steel
- Ingress protection to IP66
- Option for IP67/68
- High Level of Impact (IK10)
- High ambient temperature range



Enclosure Ratings

Product Reference	Width (mm)			Height (mm)		Depth (mm)	Weight (kg)
	X	X (H)	X (M)	Y	Y (M)	Z	
ESSX66	152	232	108	152	108	102	2.2

Standard Specifications

Material	Marine grade 316L (1.404) stainless steel with silicone gasket and stainless steel fixings	
Material Thickness	Enclosure/Door: 2mm Gland Plates: 3mm	
Ingress Protection	IP66 (as standard, IP67/68 & Type 4X option available)	
Impact Resistance	IK10	
Ambient Temp Rating	Hazardous Area: -50°C to +175°C Non-Hazardous: -60°C to +200°C	
Earthing	Earth Stud fitted to Door and Gland Plates	
Certification	Type of Protection	Equipment Coding
	Ex eb (Increased Safety)	Ex eb IIB/IIC Gb
	Ex tb (Dust Protected)	Ex tb IIIC Gb
	Ex ia/ib (Intrinsic Safety)	Ex ia IIB/IIC Ga, Ex ib IIB/IIC Gb
	Ex ta (Dust Ignition)	Ex ta IIC Da
	Ex op is/pr (Optical Radiation)	Ex op is IIB/IIC, Ex op pr IIB/IIC T4 Gb
Certificate Numbers	IECEX	IECEX CML 14.0047X
	ATEX	CML 14ATEX3123X
	UKEX	CML 21UKEX3109X
	ECAS Ex (UAE)	24-06-23146/Q24-06-049342/NB0007
	CCC (China)	2021122303114402
	InMetro (Brazil)	NCC 24.0069 X
	NEC Class 1 Zone 1	E115516
	NEC Class 1 Division 2	E115516
TRCU (Eurasian Customs Union)	RU C-GB.HA65.B.01696/23	

Options

Gland Plates (available on all sides)
Rear entries
Electro-polished external surfaces
Epoxy powder coated, smooth finish (RAL colour may be specified)
Component Mounting Plate
Breather Drain
Internal earthing bar

Dimensions

